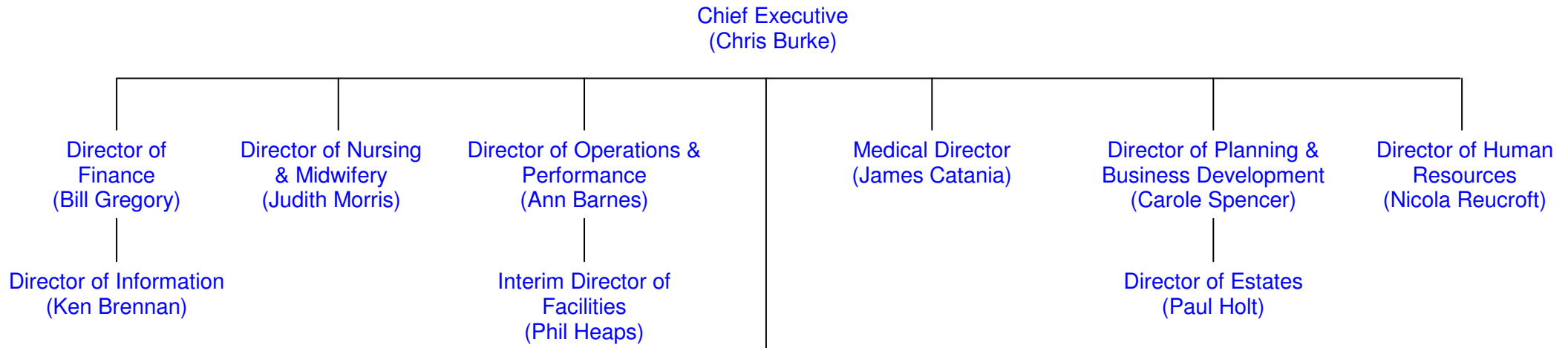


**STOCKPORT NHS FOUNDATION TRUST – MANAGEMENT ARRANGEMENTS**



**BUSINESS GROUPS**

**Business Group – Medicine**

*Clinical Directors*

- Department of Medicine for Older People (Shivakumar Krishnamoorthy)
- General Medicine (Debashis Das)
- Acute Medicine (Darren Kilroy)

*Associate Director – Patricia Conaghan*

**Business Group – Surgery and Critical Care**

*Clinical Directors*

- Urology & Maxillofacial (Stephen Brown)
- General Surgery, Ophthalmology & Endoscopy (Mohammed Saeed)
- T&O and ENT (David Johnson)
- Critical Care (Richard Ellis)

*Associate Director – James Sumner*

**Business Group – Women’s and Children’s**

*Clinical Directors*

- Paediatrics & Neonatal (Patrick Miller)
- Obstetrics & Gynaecology (Ahmed Yassin)

*Interim Associate Director – Karen Hatchell*

**Business Group – Diagnostics & Clinical Support**

*Clinical Directors*

- Laboratory Medicine (Gillian Burrows)
- Radiology (Abdul Choudhri)
- Clinical Support (Paul Buckley from 30/01/2012)

*Associate Director – Penny Martin*